

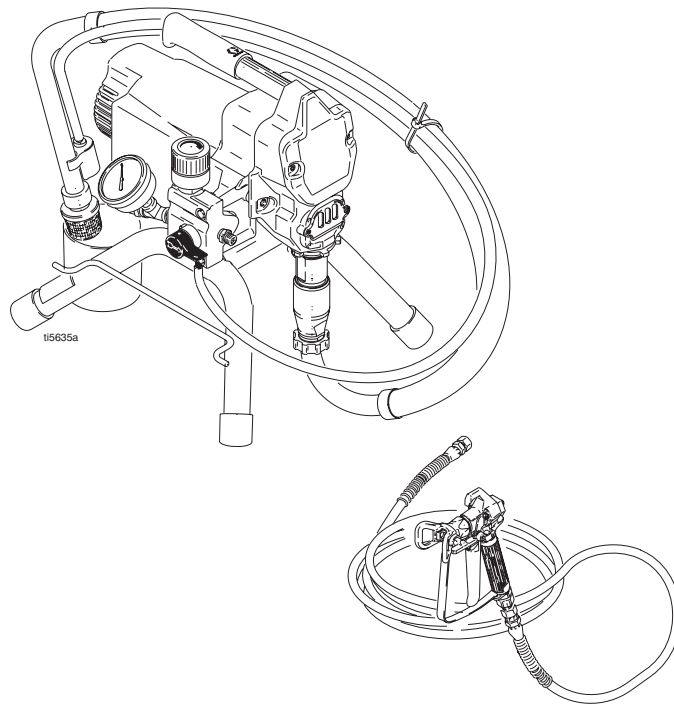
Parts



390™ Airless Sprayer

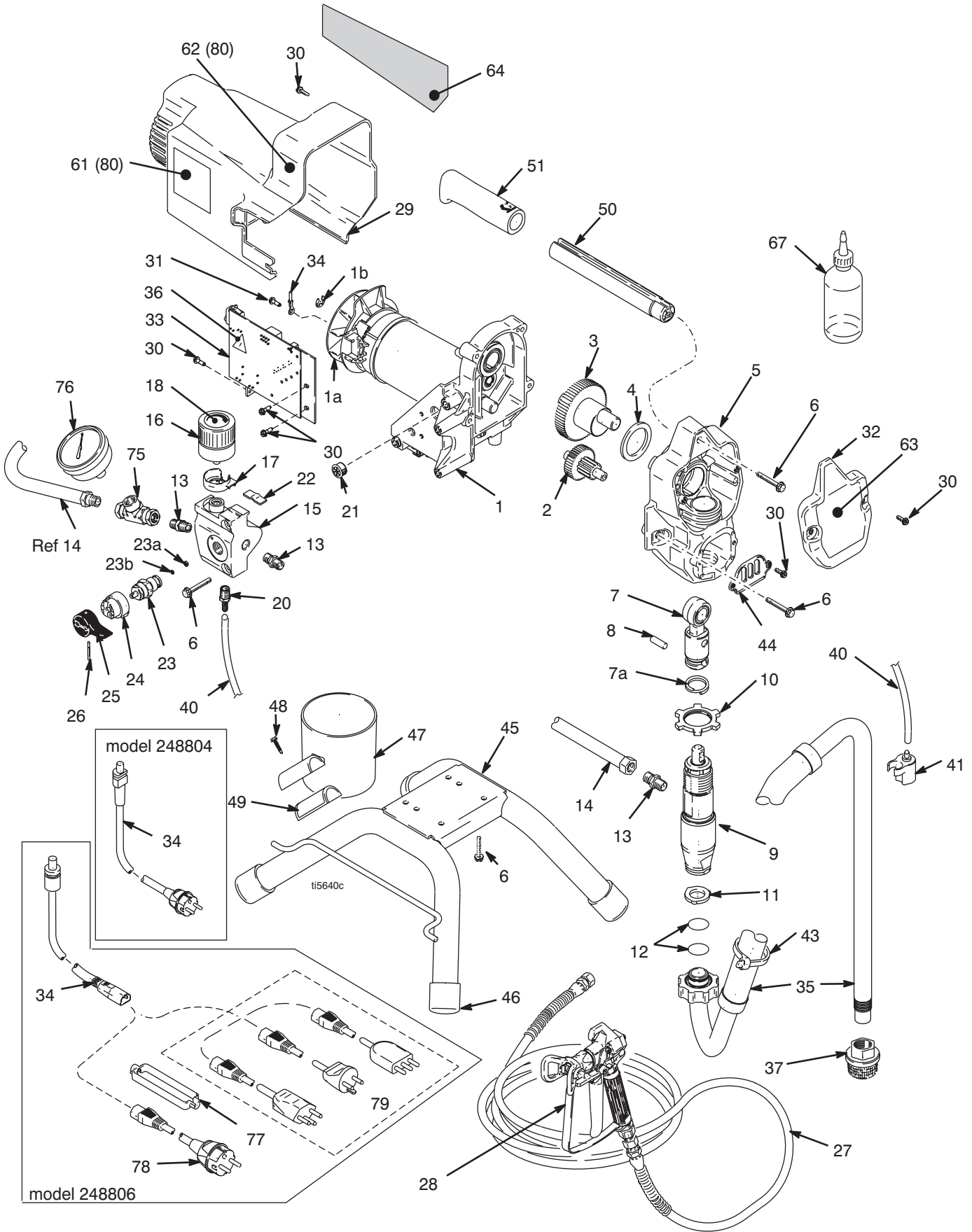
Model 248804 and 248806

310877B



PROVEN QUALITY. LEADING TECHNOLOGY.





Parts

F/N	Item	Description	Qty	F/N	Item	Description	Qty
				33‡	249053	CONTROLBOARD, 240V	1
1❖	249041	MOTOR, electric, 240V, includes 1a, 1b	1	34	15B470	CORD, power (model 248804)	1
					15B471	CORD, power (model 248806), requires 77, 78, & 79	1
1a	249043	FAN, motor	1				
1b	119653	RING, retaining	1	35	249050	HOSE, suction set, includes 11, 12, & 37	1
2	249194	GEAR, reducer	1				
3	249195	GEAR, crankshaft, includes 4	1	36◆	189930	LABEL, caution	1
4	180131	BEARING, thrust	1	37	246385	STRAINER, 7/8-14 unf	1
5	249049	HOUSING, drive, includes 6, 30, & 44	1	40	249051	KIT, tube, drain, includes 20, 41, & 43	1
6	117493	SCREW, mach, hex washer hd	11	41	244035	DEFLECTOR, barbed	1
7	287053	ROD, connecting, includes 7a & 8	1	43	114958	STRAP, tie	1
7a	196750	SPRING, retaining	1	44	15B589	COVER, pump rod	1
8	196762	PIN, straight	1	45	15E823	FRAME, standmount	1
9	249127	PUMP, displacement, includes 13 (manual 309250)	1	46	112759	CAP, tubing	4
				47	15B513	CUP, suction/drain	1
10	195150	NUT, jam, pump	1	48	115723	SCREW, drill, hex washer head	1
11	115099	WASHER, garden hose	1	49	15E713	ADAPTER, cup, tube, 1 inch	1
12	117559	O-RING	2	50	249048	HANDLE, includes 6, 51	1
13	162453	FITTING, (1/4 npsm X 1/4 npt)	3	51	116139	GRIP, handle	1
14	287003	HOSE, cpld	1	61◆	195813	LABEL, safety	1
15	15E295	MANIFOLD, control, pressure	1	62◆	195793	LABEL, warning	1
16	248929	CONTROL, pressure, 240V, includes 17, 21, 22	1	63	15E826	LABEL, front	1
				64	15E827	LABEL, side	1
17	15E794	CAP, wire, control, pressure	1	67	206994	FLUID, TSL, 4 oz	1
18	15F399	LABEL, control	1	75	119783	TEE, swivel	1
20	M70809	FITTING	1	76	115523	GAUGE, pressure, fluid	1
21	115756	BUSHING	1	77	195551	RETAINER, plug, adapter, requires 34 - 15B471, 78, & 79	1
22	119723	TAPE, foam	1				
23	235014	VALVE, drain, includes 23a, 23b	1	78	242001	CORD, set, adapter, Europe, requires 34 - 15B471, 77, & 79)	1
23a	111699	GASKET, seat	1				
23b	187615	SEAT, valve	1	79	287121	CORD, set, requires 34 - 15B471, 77, & 78)	1
24	224807	BASE, valve	1				
25	187625	HANDLE, valve, drain	1	80	243308	LABEL, set, ES International	1
26	111600	PIN, grooved	1				
27	240794	HOSE, cpld, 1/4x 50'	1		‡119688	FUSE, replacement	
28	246232	GUN, FTX, contractor (manual 309639)	1		❖249042	KIT, brush, motor, replacement	
29	249044	KIT, shield, motor, includes 30, 61, 62, & 64	1	◆ Replacement Danger and Warning labels, tags, and cards are available at no cost.			
30	117501	SCREW, machine, hex washer head	9				
31	115498	SCREW, mch, slot, hex, wash hd	1				
32	249046	COVER, front, includes 30, 63	1				

TO PLACE AN ORDER, contact your Graco distributor, or call **1-800-690-2894** to identify the nearest distributor. All written and visual data contained in this document reflects the latest product information available at the time of publication. Graco reserves the right to make changes at any time without notice.

Graco Headquarters: Minneapolis
International Offices: Belgium, China, Japan, Korea
GRACO INC. P.O. BOX 1441 MINNEAPOLIS, MN 55440-1441
www.graco.com
Printed in USA 310877B
1/2005 Rev 2/2005